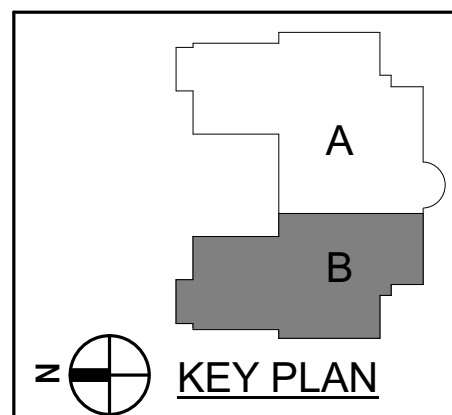
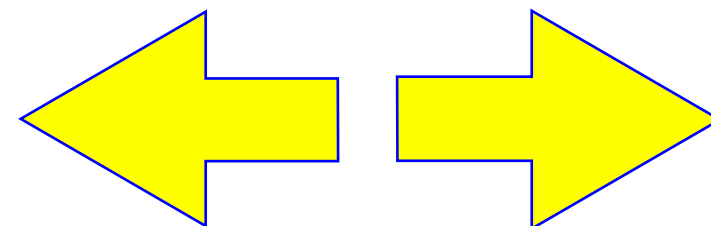


3/27/2019 1:04:21 PM



1 FIRST FLOOR ACCENT FINISH PLAN
3/32" = 1'-0"



GENERAL NOTES

A. ACCENT FINISH PLAN INDICATES PATTERNED AREAS ONLY, REFER TO FINISH SCHEDULE FOR A COMPLETE LIST OF FINISHES.
B. ACCENT PAINT LOCATIONS ARE INDICATED AS A-P AND EXTENTS ARE SHOWN BY DASHED LINES.
C. ACOUSTICAL WALL PANEL LOCATIONS ARE INDICATED AS AWP AND EXTENTS ARE SHOWN BY DASHED LINES.

FLOOR PATTERN KEYNOTES

REPRESENTED BY [Symbol]

APPLIES TO DRAWINGS A3.0.1 - A3.0.n

1 ACCENT PAINT ON WALL AT LANDING

Dobo Hall Renovation - Package A

SCO PROJECT NO. 18-19798-01A
UNC Wilmington
4978 CAHILL DR, WILMINGTON, NC 28403

PROJECT NO.	DATE
580999	MARCH 27, 2019
REVISIONS	
DATE	DESCRIPTION

FIRST FLOOR
ACCENT FINISH
PLAN

A3.0.2



MOSELEYARCHITECTS

911 N. WEST STREET, SUITE 205 RALEIGH, NORTH CAROLINA 27603
PHONE (919) 845-0691
MOSELEYARCHITECTS.COM